



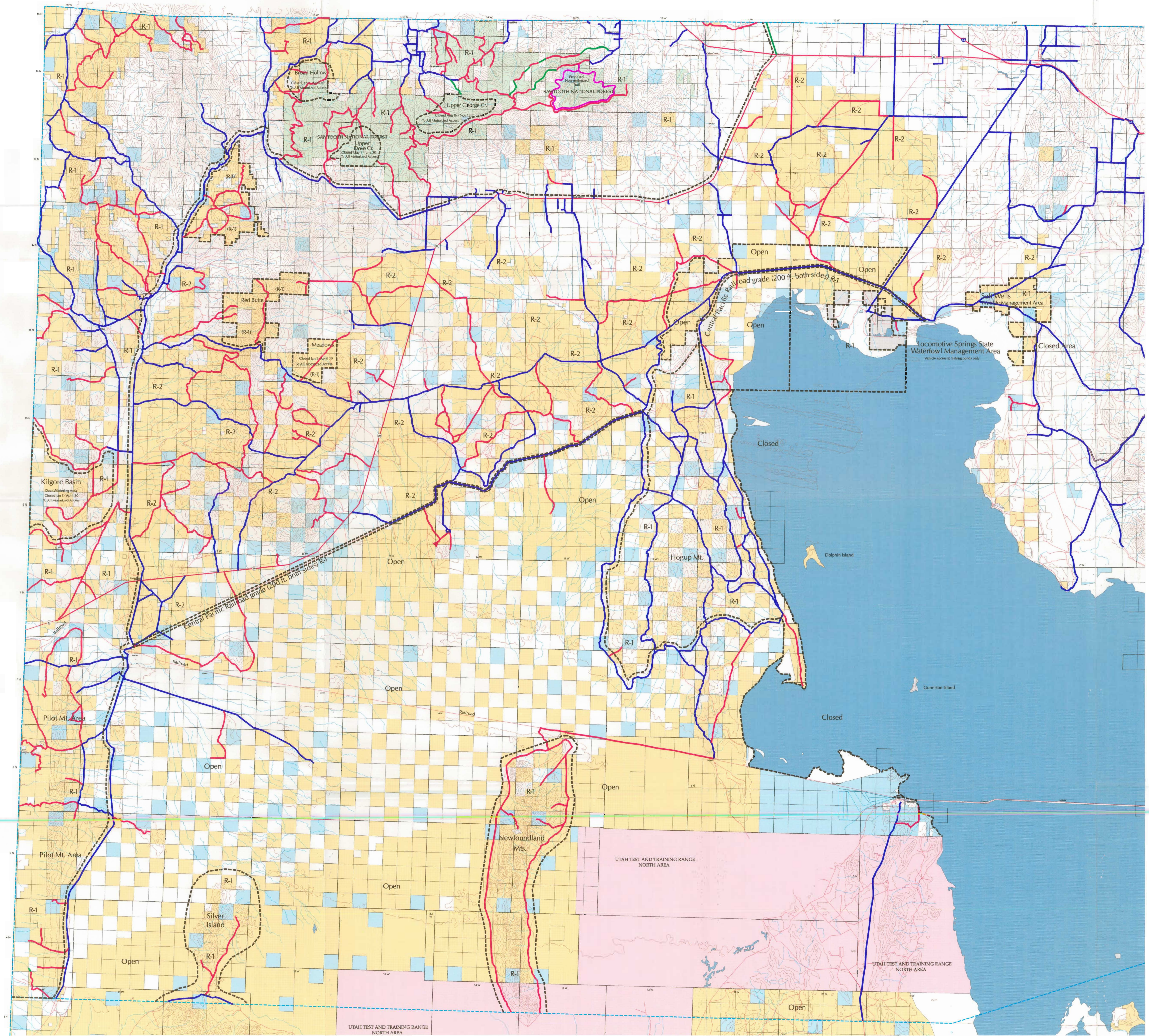
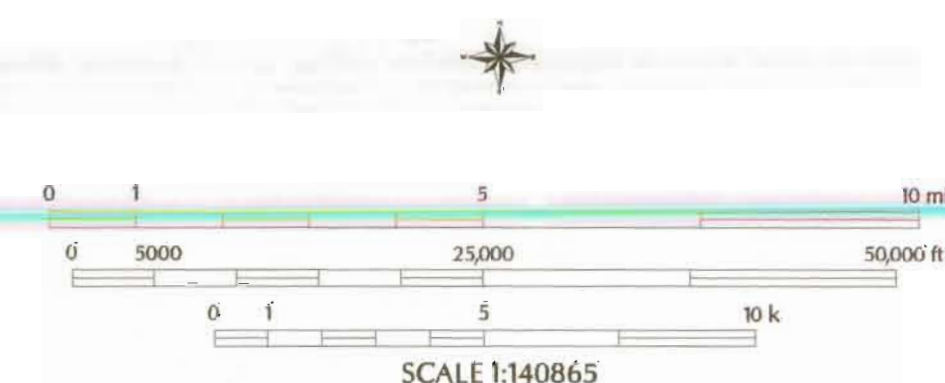
LEGEND

- Forest Service
- Bureau of Land Management
- Trust Land
- State Sovereign Land
- Native American Reservation
- Private Land
- Department of Defense
- National Parks, Monuments, & Historic Sites
- State Parks & Recreation Areas
- State Wildlife Reserves & Management Areas
- National Recreation Areas
- National Wildlife Refuge
- National Wilderness Areas
- Bankhead Jones
- Water
- Intermittent Water
- Federal Boundary
- County Boundary
- Water Courses
- Federal or State Highway
- Class B Roads - Paved or Graded Gravel
- Class D Roads - Passable with a vehicle with 4 wheels, high clearance, and in many cases requiring 4WD
- Desirable (Class D)
- Proposed Non-Motorized Trail
- Wildlife Seasonal Access Management or Recreational Access Management Areas

The Following Designations Apply to Public, State Trust, and Sovereign Lands Only:

- Open - Area available for motorized travel
 - R1 - Motorized travel is authorized only on routes shown on map, except cross country travel by snowmobile is authorized where ample snow cover is present
 - R2 - Motorized travel is authorized only on existing routes, except cross country travel by snowmobile is authorized where ample snow cover is present
 - Closed - Closed to all motorized use. Trails shown are for non-motorized use only
- Note: Public must stay on designated roads when traveling through private land
When Traveling cross country by snowmobile, avoid disturbing wildlife and livestock
Camping on Public, State Trust, and Sovereign Lands is permitted within 0.2 miles of roads authorized for motorized travel.

Information on this map was derived from USGS DLG files out of the State Geographic Information Database (SGID) from the Automated Geographic Reference Center (AGRC) at 1:100,000 scale - ownership, roads, hydrography, federal boundaries, county boundaries. The ownership data was then rectified to the Trust Land Administration's (TLA) 1:24,000 PLS data (section lines) taken from USGS DLG files, USFS CFF files and internally digitized data. Trust land surface and mineral ownership is being edited and verified by TLA. Ownership of less than a section is approximate. Official and detailed information is available through TLA and AGRC. Contour line data was derived from USGS DEM files at 1:250,000 scale (3 arc second) and generated into 200 foot contour intervals. Information shown at a smaller scale than its source scale may not be accurate and is for reference only (Mineral ownership is not complete for the entire state).



Proposed West Box Elder County Access Management Plan

July 06, 1998